

1-[3-(4-Methoxyphenyl)-6-methyl-1,6-dihydro-1,2,4,5-tetrazin-1-yl]propanone

Zhen-zhen Yang, Feng Xu* and Hong-yun Chen

Department of Biological and Chemical Engineering, Taizhou Vocational and Technical college, Taizhou 318000, People's Republic of China
Correspondence e-mail: xufeng901@126.com

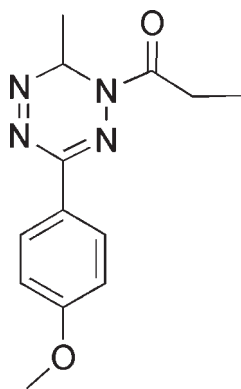
Received 22 March 2010; accepted 24 March 2010

Key indicators: single-crystal X-ray study; $T = 93$ K; mean $\sigma(\text{C}-\text{C}) = 0.002$ Å; R factor = 0.036; wR factor = 0.081; data-to-parameter ratio = 16.7.

In the title compound, $\text{C}_{13}\text{H}_{16}\text{N}_4\text{O}_2$, the central tetrazine ring adopts an unsymmetrical boat conformation with the two C atoms as flagpoles. This compound can be considered as having homoaromaticity.

Related literature

For the biological activity of 1,2,4,5-tetrazine derivatives, see: Sauer (1996). For related structures, see: Jennison *et al.* (1986); Stam *et al.* (1982); Xu *et al.* (2010). For the structure–activity relationships of 1,6-dihydro-1,2,4,5-tetrazine derivatives, see: Hu *et al.* (2004, 2005).



Experimental

Crystal data

| | |
|--|-----------------------------------|
| $\text{C}_{13}\text{H}_{16}\text{N}_4\text{O}_2$ | $\gamma = 93.268$ (11) $^\circ$ |
| $M_r = 260.30$ | $V = 651.0$ (3) Å ³ |
| Triclinic, $P\bar{1}$ | $Z = 2$ |
| $a = 8.345$ (2) Å | Mo $K\alpha$ radiation |
| $b = 8.4898$ (19) Å | $\mu = 0.09$ mm ⁻¹ |
| $c = 10.245$ (3) Å | $T = 93$ K |
| $\alpha = 113.232$ (6) $^\circ$ | $0.50 \times 0.37 \times 0.23$ mm |
| $\beta = 99.820$ (15) $^\circ$ | |

Data collection

| | |
|--|--|
| Rigaku AFC10/Saturn724+ diffractometer | 2920 independent reflections |
| 6410 measured reflections | 2207 reflections with $I > 2\sigma(I)$ |
| | $R_{\text{int}} = 0.022$ |

Refinement

| | |
|---------------------------------|---|
| $R[F^2 > 2\sigma(F^2)] = 0.036$ | 175 parameters |
| $wR(F^2) = 0.081$ | H-atom parameters constrained |
| $S = 1.00$ | $\Delta\rho_{\text{max}} = 0.32$ e Å ⁻³ |
| 2920 reflections | $\Delta\rho_{\text{min}} = -0.21$ e Å ⁻³ |

Data collection: *CrystalClear* (Rigaku/MS, 2008); cell refinement: *CrystalClear*; data reduction: *CrystalClear*; program(s) used to solve structure: *SHELXS97* (Sheldrick, 2008); program(s) used to refine structure: *SHELXL97* (Sheldrick, 2008); molecular graphics: *SHELXTL* (Sheldrick, 2008); software used to prepare material for publication: *SHELXTL*.

The authors are grateful to the Science Foundation for Excellent Youth Scholars of the Department of Education of Zhejiang province and the Foundation of Taizhou Vocational and Technical College (grant No. 2010ZD08) for financial support.

Supplementary data and figures for this paper are available from the IUCr electronic archives (Reference: CI5067).

References

- Hu, W. X., Rao, G. W. & Sun, Y. Q. (2004). *Bioorg. Med. Chem. Lett.* **14**, 1177–1181.
- Hu, W. X., Shi, H. B., Yuan, Q. & Sun, Y. Q. (2005). *J. Chem. Res.* pp. 291–293.
- Jennison, C. P. R., Mackay, D., Watson, K. N. & Taylor, N. J. (1986). *J. Org. Chem.* **51**, 3043–3051.
- Rigaku/MS (2008). *CrystalClear*. Rigaku/MS Inc., The Woodlands, Texas, USA.
- Sauer, J. (1996). *Comprehensive Heterocyclic Chemistry*, 2nd ed., edited by A. J. Boulton, Vol. 6, pp. 901–955. Oxford: Elsevier.
- Sheldrick, G. M. (2008). *Acta Cryst.* **A64**, 112–122.
- Stam, C. H., Counotte-Potman, A. D. & Van der Plas, H. C. (1982). *J. Org. Chem.* **47**, 2856–2858.
- Xu, F., Yang, Z. Z., Hu, W. X. & Xi, L. M. (2010). *Chin. J. Org. Chem.* **30**, 260–265.

supplementary materials

Acta Cryst. (2010). E66, o969 [doi:10.1107/S1600536810011165]

1-[3-(4-Methoxyphenyl)-6-methyl-1,6-dihydro-1,2,4,5-tetrazin-1-yl]propanone

Z. Yang, F. Xu and H. Chen

Comment

1,2,4,5-Tetrazine derivatives have high potential for biological activity, possessing a wide spectrum of antiviral and antitumor properties. They have been widely used in pesticides and herbicides (Sauer, 1996). Dihydro-1,2,4,5-tetrazine has four isomers, namely 1,2-, 1,4-, 1,6- and 3,6-dihydro-1,2,4,5-tetrazines. The 1,6-dihydro structures (Stam *et al.*, 1982; Jennison *et al.*, 1986) were found, by X-ray diffraction, to be homoaromatic. In continuation of our work on the structure-activity relationship of 1,6-dihydro-1,2,4,5-tetrazine derivatives (Hu *et al.*, 2004,2005), we report here the crystal structure of the title compound (I) (Fig. 1).

In the tetrazine ring, atoms N1, N2, N3 and N4 are coplanar, while atoms C7 and C8 deviate from the plane by 0.239 (2) and 0.595 (2) Å, respectively. The N2/C7/N3 and N1/C8/N4 planes make dihedral angles of 21.0 (2)° and 42.2 (1)°, respectively, with the N1/N2/N3/N4 plane, *i.e.* the tetrazine ring adopts an unsymmetrical boat conformation. The benzene ring make dihedral angle of 16.7 (1)° with the N1/N2/N3/N4 plane. Atom N1 is almost sp^2 hybridized due to the angles around it add up to 360.0 (2)°. In keeping with similar situations in 3-phenyl-6-ethyl-1,6-dihydro-1,2,4,5-tetrazine (Stam *et al.*, 1982), *N*-(2-methylphenyl)-3-phenyl-6-methyl-1,6-dihydro-1,2,4,5-tetrazine (Xu *et al.*, 2010) and 1-acetyl-3,6-dimethyl-1,2,4,5-tetrazine (Jennison *et al.*, 1986), it can be considered that the molecule is homoaromatic.

Experimental

3-(4-Methoxyphenyl)-6-methyl-1,6-dihydro-1,2,4,5-tetrazine (3.0 mmol), chloroform (10 ml) and pyridine (0.25 ml, 3.1 mmol) were mixed. Propionyl chloride (3.0 mmol) in chloroform (10 ml) was added dropwise with stirring at room temperature. After the starting, 1,6-dihydro-1,2,4,5-tetrazine was completely consumed (the reaction courses was monitored by TLC, dichloromethane system), evaporation of the chloroform, crude 1-propionyl-3-(4-methoxyphenyl)-6-methyl-1,6-dihydro-1,2,4,5-tetrazine was obtained and purified by preparative thin-layer chromatography over silica gel GF254 (2 mm) (dichloromethane-petroleum ether, 1:1). The solution of the compound in anhydrous ethanol was concentrated gradually at room temperature to afford single crystals, which was suitable for X-ray diffraction (m.p. 340–342 K). ^1H NMR (CDCl_3) δ p.p.m.: 8.10 (d, 2H, $J = 8.8$ Hz), 7.03 (d, 2H, $J = 8.8$ Hz), 6.84 (q, 1H, $J = 6.4$ Hz), 3.89 (s, 3H), 2.95–3.05 (m, 1H, CH_2), 2.72–2.85 (m, 1H, CH_2), 1.20 (t, 3H, $J = 7.6$ Hz), 1.04 (d, 3H, $J = 6.4$ Hz).

Refinement

H atoms were placed in calculated positions with N—H = 0.86 Å, C—H = 0.93 (aromatic) and 0.96 Å (methyl), and refined in riding model, with $U_{\text{iso}}(\text{H}) = 1.2U_{\text{eq}}(\text{C}, \text{N})$ and $1.5U_{\text{eq}}(\text{C}_{\text{methyl}})$.

Figures

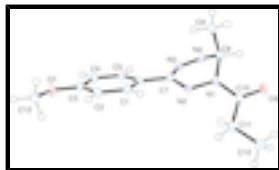


Fig. 1. The molecular structure of the title compound, showing 50% probability displacement ellipsoids and the atomic numbering.

1-[3-(4-Methoxyphenyl)-6-methyl-1,6-dihydro-1,2,4,5-tetrazin-1-yl]propanone

Crystal data

$C_{13}H_{16}N_4O_2$

$M_r = 260.30$

Triclinic, $P\bar{1}$

Hall symbol: -P 1

$a = 8.345$ (2) Å

$b = 8.4898$ (19) Å

$c = 10.245$ (3) Å

$\alpha = 113.232$ (6)°

$\beta = 99.820$ (15)°

$\gamma = 93.268$ (11)°

$V = 651.0$ (3) Å³

$Z = 2$

$F(000) = 276$

$D_x = 1.328$ Mg m⁻³

Mo $K\alpha$ radiation, $\lambda = 0.71073$ Å

Cell parameters from 1846 reflections

$\theta = 3.4$ – 27.5 °

$\mu = 0.09$ mm⁻¹

$T = 93$ K

Prism, red

$0.50 \times 0.37 \times 0.23$ mm

Data collection

Rigaku AFC10/Saturn724+
diffractometer

Radiation source: Rotating Anode
graphite

Detector resolution: 28.5714 pixels mm⁻¹

φ and ω scans

6410 measured reflections

2920 independent reflections

2207 reflections with $I > 2\sigma(I)$

$R_{int} = 0.022$

$\theta_{max} = 27.5$ °, $\theta_{min} = 3.4$ °

$h = -10 \rightarrow 10$

$k = -11 \rightarrow 11$

$l = -13 \rightarrow 12$

Refinement

Refinement on F^2

Least-squares matrix: full

$R[F^2 > 2\sigma(F^2)] = 0.036$

$wR(F^2) = 0.081$

$S = 1.00$

2920 reflections

175 parameters

Primary atom site location: structure-invariant direct methods

Secondary atom site location: difference Fourier map

Hydrogen site location: inferred from neighbouring sites

H-atom parameters constrained

$w = 1/[\sigma^2(F_o^2) + (0.0282P)^2 + 0.16P]$

where $P = (F_o^2 + 2F_c^2)/3$

$(\Delta/\sigma)_{max} = 0.001$

$\Delta\rho_{max} = 0.32$ e Å⁻³

0 restraints

$$\Delta\rho_{\min} = -0.21 \text{ e } \text{\AA}^{-3}$$

Special details

Geometry. All esds (except the esd in the dihedral angle between two l.s. planes) are estimated using the full covariance matrix. The cell esds are taken into account individually in the estimation of esds in distances, angles and torsion angles; correlations between esds in cell parameters are only used when they are defined by crystal symmetry. An approximate (isotropic) treatment of cell esds is used for estimating esds involving l.s. planes.

Refinement. Refinement of F^2 against ALL reflections. The weighted R -factor wR and goodness of fit S are based on F^2 , conventional R -factors R are based on F , with F set to zero for negative F^2 . The threshold expression of $F^2 > \sigma(F^2)$ is used only for calculating R -factors(gt) etc. and is not relevant to the choice of reflections for refinement. R -factors based on F^2 are statistically about twice as large as those based on F , and R -factors based on ALL data will be even larger.

Fractional atomic coordinates and isotropic or equivalent isotropic displacement parameters (\AA^2)

| | <i>x</i> | <i>y</i> | <i>z</i> | $U_{\text{iso}}^*/U_{\text{eq}}$ |
|------|--------------|--------------|---------------|----------------------------------|
| O1 | 1.03435 (11) | 0.17376 (12) | 0.48191 (9) | 0.0240 (2) |
| O2 | 0.16763 (10) | 0.73207 (11) | 0.11227 (10) | 0.0240 (2) |
| N1 | 0.33360 (12) | 0.55086 (13) | 0.15664 (11) | 0.0189 (2) |
| N2 | 0.47200 (12) | 0.53199 (13) | 0.23910 (11) | 0.0186 (2) |
| N3 | 0.47565 (13) | 0.27926 (13) | 0.02813 (11) | 0.0209 (2) |
| N4 | 0.34190 (13) | 0.29167 (14) | -0.04264 (11) | 0.0224 (2) |
| C1 | 0.69924 (15) | 0.41266 (16) | 0.41273 (13) | 0.0193 (3) |
| H1 | 0.6425 | 0.5041 | 0.4631 | 0.023* |
| C2 | 0.82340 (15) | 0.36341 (16) | 0.49081 (13) | 0.0198 (3) |
| H2 | 0.8512 | 0.4207 | 0.5938 | 0.024* |
| C3 | 0.90723 (14) | 0.22979 (16) | 0.41785 (13) | 0.0179 (3) |
| C4 | 0.86288 (15) | 0.14452 (16) | 0.26693 (13) | 0.0213 (3) |
| H4 | 0.9183 | 0.0516 | 0.2169 | 0.026* |
| C5 | 0.73919 (15) | 0.19411 (16) | 0.18974 (13) | 0.0198 (3) |
| H5 | 0.7102 | 0.1351 | 0.0869 | 0.024* |
| C6 | 0.65589 (14) | 0.33049 (15) | 0.26145 (13) | 0.0166 (3) |
| C7 | 0.52322 (15) | 0.38258 (16) | 0.18025 (13) | 0.0174 (3) |
| C8 | 0.23071 (15) | 0.39564 (16) | 0.04682 (13) | 0.0197 (3) |
| H8 | 0.1475 | 0.4295 | -0.0163 | 0.024* |
| C9 | 0.14232 (16) | 0.29206 (17) | 0.11103 (14) | 0.0229 (3) |
| H9A | 0.2213 | 0.2738 | 0.1846 | 0.027* |
| H9B | 0.0908 | 0.1798 | 0.0339 | 0.027* |
| H9C | 0.0577 | 0.3556 | 0.1561 | 0.027* |
| C10 | 0.29499 (15) | 0.71638 (16) | 0.18095 (13) | 0.0188 (3) |
| C11 | 0.41530 (15) | 0.86447 (16) | 0.29536 (13) | 0.0211 (3) |
| H11A | 0.5256 | 0.8546 | 0.2720 | 0.025* |
| H11B | 0.4215 | 0.8583 | 0.3906 | 0.025* |
| C12 | 0.36603 (17) | 1.03756 (17) | 0.30564 (15) | 0.0267 (3) |
| H12A | 0.3573 | 1.0429 | 0.2109 | 0.032* |
| H12B | 0.4492 | 1.1311 | 0.3782 | 0.032* |
| H12C | 0.2598 | 1.0506 | 0.3345 | 0.032* |

supplementary materials

| | | | | |
|------|--------------|--------------|--------------|------------|
| C13 | 1.07827 (16) | 0.24669 (18) | 0.63702 (14) | 0.0246 (3) |
| H13A | 1.1083 | 0.3722 | 0.6737 | 0.030* |
| H13B | 1.1719 | 0.1957 | 0.6680 | 0.030* |
| H13C | 0.9848 | 0.2222 | 0.6757 | 0.030* |

Atomic displacement parameters (\AA^2)

| | U^{11} | U^{22} | U^{33} | U^{12} | U^{13} | U^{23} |
|-----|------------|------------|------------|------------|-------------|------------|
| O1 | 0.0227 (5) | 0.0325 (5) | 0.0196 (5) | 0.0115 (4) | 0.0026 (4) | 0.0134 (4) |
| O2 | 0.0192 (5) | 0.0280 (5) | 0.0261 (5) | 0.0064 (4) | 0.0008 (4) | 0.0134 (4) |
| N1 | 0.0169 (5) | 0.0206 (5) | 0.0185 (5) | 0.0019 (4) | -0.0015 (4) | 0.0094 (4) |
| N2 | 0.0166 (5) | 0.0217 (5) | 0.0192 (5) | 0.0028 (4) | 0.0004 (4) | 0.0114 (4) |
| N3 | 0.0206 (6) | 0.0244 (6) | 0.0174 (5) | 0.0031 (4) | 0.0013 (4) | 0.0094 (5) |
| N4 | 0.0210 (6) | 0.0256 (6) | 0.0195 (5) | 0.0030 (5) | 0.0004 (5) | 0.0096 (5) |
| C1 | 0.0184 (6) | 0.0202 (6) | 0.0187 (6) | 0.0047 (5) | 0.0037 (5) | 0.0073 (5) |
| C2 | 0.0205 (6) | 0.0224 (6) | 0.0151 (6) | 0.0019 (5) | 0.0014 (5) | 0.0073 (5) |
| C3 | 0.0147 (6) | 0.0219 (6) | 0.0200 (6) | 0.0027 (5) | 0.0020 (5) | 0.0123 (5) |
| C4 | 0.0239 (7) | 0.0220 (6) | 0.0199 (6) | 0.0088 (5) | 0.0065 (5) | 0.0091 (5) |
| C5 | 0.0227 (7) | 0.0210 (6) | 0.0144 (6) | 0.0033 (5) | 0.0022 (5) | 0.0066 (5) |
| C6 | 0.0147 (6) | 0.0182 (6) | 0.0181 (6) | 0.0001 (5) | 0.0017 (5) | 0.0096 (5) |
| C7 | 0.0157 (6) | 0.0207 (6) | 0.0169 (6) | 0.0007 (5) | 0.0026 (5) | 0.0094 (5) |
| C8 | 0.0173 (6) | 0.0218 (6) | 0.0180 (6) | 0.0017 (5) | -0.0015 (5) | 0.0083 (5) |
| C9 | 0.0200 (6) | 0.0238 (7) | 0.0237 (7) | 0.0003 (5) | 0.0008 (5) | 0.0103 (5) |
| C10 | 0.0188 (6) | 0.0232 (6) | 0.0184 (6) | 0.0053 (5) | 0.0057 (5) | 0.0118 (5) |
| C11 | 0.0212 (7) | 0.0218 (7) | 0.0209 (7) | 0.0048 (5) | 0.0024 (5) | 0.0101 (5) |
| C12 | 0.0261 (7) | 0.0213 (7) | 0.0332 (8) | 0.0049 (5) | 0.0047 (6) | 0.0120 (6) |
| C13 | 0.0222 (7) | 0.0329 (7) | 0.0200 (7) | 0.0043 (6) | -0.0006 (5) | 0.0141 (6) |

Geometric parameters (\AA , $^\circ$)

| | | | |
|--------|-------------|----------|-------------|
| O1—C3 | 1.3596 (14) | C5—C6 | 1.3995 (17) |
| O1—C13 | 1.4291 (15) | C5—H5 | 0.95 |
| O2—C10 | 1.2155 (14) | C6—C7 | 1.4647 (16) |
| N1—N2 | 1.3669 (14) | C8—C9 | 1.5160 (17) |
| N1—C10 | 1.3941 (16) | C8—H8 | 1.00 |
| N1—C8 | 1.4531 (15) | C9—H9A | 0.98 |
| N2—C7 | 1.3044 (16) | C9—H9B | 0.98 |
| N3—N4 | 1.2571 (14) | C9—H9C | 0.98 |
| N3—C7 | 1.4236 (16) | C10—C11 | 1.5015 (17) |
| N4—C8 | 1.4917 (16) | C11—C12 | 1.5169 (17) |
| C1—C2 | 1.3852 (17) | C11—H11A | 0.99 |
| C1—C6 | 1.3952 (17) | C11—H11B | 0.99 |
| C1—H1 | 0.95 | C12—H12A | 0.98 |
| C2—C3 | 1.3911 (17) | C12—H12B | 0.98 |
| C2—H2 | 0.95 | C12—H12C | 0.98 |
| C3—C4 | 1.3939 (17) | C13—H13A | 0.98 |
| C4—C5 | 1.3791 (17) | C13—H13B | 0.98 |
| C4—H4 | 0.95 | C13—H13C | 0.98 |

| | | | |
|--------------|--------------|----------------|--------------|
| C3—O1—C13 | 118.23 (10) | N1—C8—H8 | 108.9 |
| N2—N1—C10 | 119.47 (10) | N4—C8—H8 | 108.9 |
| N2—N1—C8 | 118.20 (10) | C9—C8—H8 | 108.9 |
| C10—N1—C8 | 122.32 (10) | C8—C9—H9A | 109.5 |
| C7—N2—N1 | 113.70 (10) | C8—C9—H9B | 109.5 |
| N4—N3—C7 | 120.02 (11) | H9A—C9—H9B | 109.5 |
| N3—N4—C8 | 115.25 (10) | C8—C9—H9C | 109.5 |
| C2—C1—C6 | 121.25 (12) | H9A—C9—H9C | 109.5 |
| C2—C1—H1 | 119.4 | H9B—C9—H9C | 109.5 |
| C6—C1—H1 | 119.4 | O2—C10—N1 | 119.15 (11) |
| C1—C2—C3 | 119.76 (11) | O2—C10—C11 | 124.57 (12) |
| C1—C2—H2 | 120.1 | N1—C10—C11 | 116.27 (10) |
| C3—C2—H2 | 120.1 | C10—C11—C12 | 111.53 (11) |
| O1—C3—C2 | 125.16 (11) | C10—C11—H11A | 109.3 |
| O1—C3—C4 | 115.33 (11) | C12—C11—H11A | 109.3 |
| C2—C3—C4 | 119.50 (11) | C10—C11—H11B | 109.3 |
| C5—C4—C3 | 120.48 (12) | C12—C11—H11B | 109.3 |
| C5—C4—H4 | 119.8 | H11A—C11—H11B | 108.0 |
| C3—C4—H4 | 119.8 | C11—C12—H12A | 109.5 |
| C4—C5—C6 | 120.64 (11) | C11—C12—H12B | 109.5 |
| C4—C5—H5 | 119.7 | H12A—C12—H12B | 109.5 |
| C6—C5—H5 | 119.7 | C11—C12—H12C | 109.5 |
| C1—C6—C5 | 118.35 (11) | H12A—C12—H12C | 109.5 |
| C1—C6—C7 | 120.72 (11) | H12B—C12—H12C | 109.5 |
| C5—C6—C7 | 120.91 (11) | O1—C13—H13A | 109.5 |
| N2—C7—N3 | 121.12 (11) | O1—C13—H13B | 109.5 |
| N2—C7—C6 | 121.13 (11) | H13A—C13—H13B | 109.5 |
| N3—C7—C6 | 116.68 (11) | O1—C13—H13C | 109.5 |
| N1—C8—N4 | 106.07 (9) | H13A—C13—H13C | 109.5 |
| N1—C8—C9 | 112.98 (10) | H13B—C13—H13C | 109.5 |
| N4—C8—C9 | 110.99 (10) | | |
| C10—N1—N2—C7 | -159.83 (10) | N4—N3—C7—C6 | 164.47 (10) |
| C8—N1—N2—C7 | 20.73 (14) | C1—C6—C7—N2 | 18.43 (17) |
| C7—N3—N4—C8 | -9.80 (16) | C5—C6—C7—N2 | -163.36 (11) |
| C6—C1—C2—C3 | 0.09 (18) | C1—C6—C7—N3 | -173.30 (11) |
| C13—O1—C3—C2 | 5.43 (17) | C5—C6—C7—N3 | 4.91 (16) |
| C13—O1—C3—C4 | -175.44 (11) | N2—N1—C8—N4 | -52.33 (13) |
| C1—C2—C3—O1 | 177.78 (11) | C10—N1—C8—N4 | 128.25 (11) |
| C1—C2—C3—C4 | -1.32 (18) | N2—N1—C8—C9 | 69.47 (13) |
| O1—C3—C4—C5 | -177.85 (11) | C10—N1—C8—C9 | -109.95 (13) |
| C2—C3—C4—C5 | 1.33 (18) | N3—N4—C8—N1 | 45.04 (13) |
| C3—C4—C5—C6 | -0.12 (18) | N3—N4—C8—C9 | -78.02 (13) |
| C2—C1—C6—C5 | 1.10 (17) | N2—N1—C10—O2 | -176.38 (11) |
| C2—C1—C6—C7 | 179.36 (11) | C8—N1—C10—O2 | 3.04 (17) |
| C4—C5—C6—C1 | -1.09 (17) | N2—N1—C10—C11 | 2.16 (16) |
| C4—C5—C6—C7 | -179.34 (11) | C8—N1—C10—C11 | -178.43 (10) |
| N1—N2—C7—N3 | 20.73 (16) | O2—C10—C11—C12 | -5.10 (17) |
| N1—N2—C7—C6 | -171.53 (10) | N1—C10—C11—C12 | 176.46 (11) |
| N4—N3—C7—N2 | -27.26 (17) | | |

Fig. 1

